

Boston Scientific is advancing...



Our mission

Boston Scientific is dedicated to transforming lives through innovative medical solutions that improve the health of patients around the world.



...science for life.

Our values

Caring We act with integrity and compassion to support patients, customers, our communities and each other.	Meaningful Innovation We advance science through medical technologies that decrease the physical and emotional impact on patients and reduce the cost of healthcare.	High Performance We strive for high performance to benefit our patients, clinicians and shareholders.
Global Collaboration We work collaboratively to pursue global opportunities that extend the reach of our medical solutions.	Diversity We embrace diversity and value the unique talents, ideas and experiences of our employees.	Winning Spirit We adapt to change and act with speed, agility and accountability to further improve patient care.

Our heritage

Boston Scientific was founded in 1979 with a clear purpose – to benefit public health by bringing more accessible, lower-cost, and lower-trauma medical options to patients. For more than three decades, Boston Scientific has fulfilled that purpose by advancing medical science through the development and commercialization of transformative medical technologies.

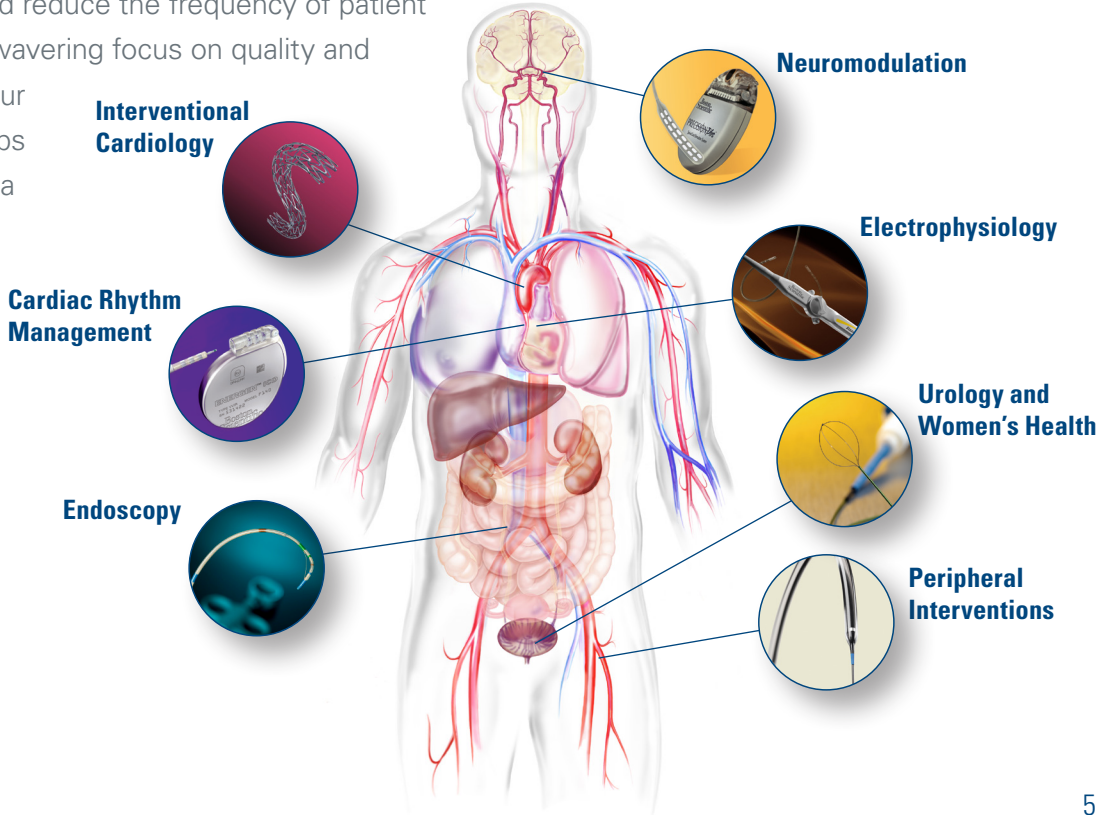


What began in the late 1960s as a family of steerable catheters that ushered in an era of less-invasive procedures has grown to one of the broadest and deepest portfolios of medical solutions in our industry.

Our core

At Boston Scientific, we believe that only an innovation realized can improve health, change an outlook or transform a life. That’s why we’re committed to pioneering, innovating and advancing science. Our heritage of discovery continues to drive our passion for meaningful innovations that help patients live healthier, longer lives.

Today, as a global market leader, Boston Scientific invests nearly \$1 billion annually to innovate and bring to market medical devices and procedures that address unmet clinical needs and reduce the frequency of patient re-intervention. Our unwavering focus on quality and patient outcomes and our collaborative relationships with clinicians make us a provider of choice for innovative products, technologies and services across a wide range of medical specialties.



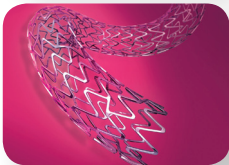
Our advancements

With the caring and winning spirit of our diverse workforce, we plan to maximize global opportunities and push the boundaries of today's medical solutions that lead to tomorrow's meaningful innovations.

Today we are...



Minimizing sudden cardiac death through implantable devices



Offering less-invasive options in the fight against cardiovascular disease

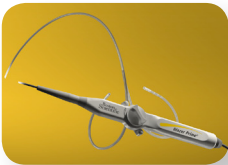


Relieving symptoms for those who suffer from chronic pain, and treating patients with Parkinson's disease¹



Treating pelvic floor disorders so women may improve their quality of life

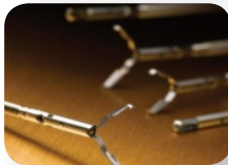
Diagnosing and treating heart rhythm disorders



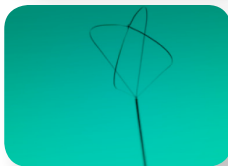
Treating patients with life-limiting vascular and venous diseases



Treating a variety of digestive and pulmonary diseases



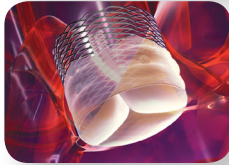
Reducing urinary discomfort caused by kidney and bladder stones



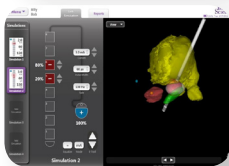
Tomorrow, we plan to...



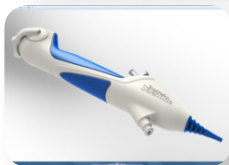
Offer more patients a way to protect their heart without touching it



Offer minimally invasive treatments for valve disorders²

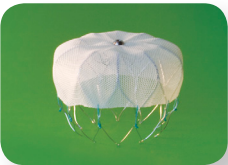


Offer relief to patients with neurological movement disorders³

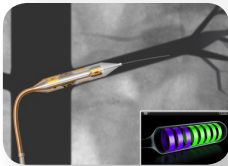


Offer innovative solutions to treat a broader group of women

Bring innovative technologies to more markets for patients with atrial fibrillation⁴



Treat hypertension and cancer through catheter-based therapies⁵



Improve lives for more asthma sufferers and extend treatment to emphysema sufferers



Increase global patient access to urologic treatments through cost-effective technologies



¹ Boston Scientific currently has approval for Parkinson's disease in the EU only.

^{2,3,4,5} Shown above is the Lotus™ Aortic Valve System (a transcatheter aortic valve replacement (TAVR) device)(2), an investigational device worldwide and not available for sale. Also shown above is the Guide™ DBS Programming System(3), the WATCHMAN® Left Atrial Appendage (LAA) Closure Device(4), and the Vessix™ Renal Denervation System(5). In the U.S., these are investigational devices and not available for use or sale.

Watch our [corporate video](#) to see how we are advancing science for life.

Our corporate citizenship

At Boston Scientific, we are also committed to advancing opportunities that improve lives in the communities where we live and work. We bring this commitment to life through global, national and local health and education initiatives, improving patient advocacy and minimizing our impact on the environment.

Patient Advocacy

Close the Gap is Boston Scientific's health equity initiative. This program helps to ensure all patients have access to high quality cardiac care regardless of age, gender, race, ethnicity, or primary language. Close the Gap supports educational outreach programs in communities across the United States in partnership with health care providers, professional societies and patient advocacy groups.



Health and Education

The **Boston Scientific Foundation** is at work in clinics, schools and neighborhoods across the United States, helping to expand access to quality health care and educational opportunities for everyone.

Since 2002, the Boston Scientific Foundation has donated more than \$30 million to help charitable organizations. The Boston Scientific Foundation funds education programs dedicated to advancing the next generation of life science innovators by fostering an interest in math and science among children and pre-teens, and supporting budding high school-and college-aged scientists, engineers and clinicians. The Boston Scientific Foundation also supports disease prevention and awareness efforts to help people reduce their risk of chronic illness.



Sustainability

Environmental sustainability is an important consideration in our overall operations. By building infrastructure with environmental impact in mind, we are carefully using natural resources, minimizing recycling and reusing waste.

With more than 70% of our major facilities already ISO14001-certified, we continue to reduce our carbon footprint and work toward our goal of 100% worldwide certification for design and implementation of effective environmental management systems.

To learn more about our Corporate Citizenship Programs visit www.bostonscientific.com/citizenship.



Boston Scientific by the numbers

1 of the world's largest medical device companies

15,000+ patents issued;

~7,300 applications pending worldwide

~\$886 million invested annually in R&D

~24,000 employees worldwide

Market presence in nearly **100** countries worldwide

\$7.3 billion in annual sales

\$933 million adjusted net income*

All numbers above as of December 31, 2012.

*Adjusted net income excludes acquisition, litigation, divestiture, restructuring, and other charges. For reconciliations of our adjusted net income and other of our non-GAAP financial measures, please refer to the Investor Relations section of our website at www.bostonscientific.com

To learn more about our history, leadership or businesses, please visit www.bostonscientific.com/us/about.html.

**Boston
Scientific**

Corporate Headquarters
One Boston Scientific Place
Natick, MA 01760-1537
United States
508-650-8000

www.bostonscientific.com

CORP-133401-AB JULY2013